



5 Bed House - End Town

24 Duffield Road

Five Lamps

Derby

DE1 3BG

£1,795 Per Month



Fletcher
& Company

24 Duffield Road
Derby
DE1 3BG



- Grade II Listed End Terrace - Available Immediately
- Five Lamps Conservation Area
- Private Garden And OFF ROAD PARKING
- Versatile Accommodation Over Four Floors (Including Self Contained Apartment)
- Separate Ground Floor Apartment - For Annexed Accommodation With Own Entrance
- Much Original Character Throughout
- Four Bedrooms To Main House
- Two Large Reception Rooms And Well Appointed Kitchen
- Short Distance To Cathedral Quarter And Beautiful Darley Park
- Extremely Convenient Location

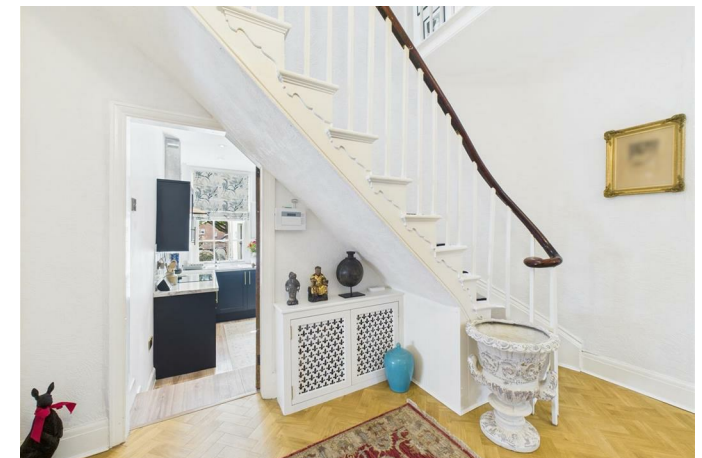
WITH PRIVATE DRIVEWAY - An exceptional opportunity to live within a piece of Derby's Victorian history. A beautifully preserved grade II listed end terrace built circa 1850. Located within the revitalised Five Lamps conservation area, a short walk from Derby city centre. This spacious and elegant home offers versatility, original charm externally accessed lower ground floor apartment.

THE MAIN HOUSE: Fabulous entrance hall with beautiful staircase to first floor, two large reception rooms with original period detailing, refitted kitchen, utility and guest cloakroom. Feature first floor landing leading to three bedrooms and large bathroom. The second floor comprises two further good sized rooms.

LOWER GROUND FLOOR APARTMENT: Self contained. Comprises lounge, kitchen, double bedroom and shower room. May suit multi generational living/accommodation for dependent relative/s.

OUTSIDE: Private low maintenance garden, outbuilding and off road parking space with PRIVATE DRIVE.

The property is available Immediately.





The Location

The property's location is in the highly sought after Five Lamps conservation area of Derby, just north of the city centre and close to the attractive Cathedral Quarter, Sadlergate and Irongate. In this area there is a selection of architecture and an impressive cathedral, a varied selection of restaurants, bars and cafes. The property is also convenient for beautiful Darley Park and walks along the river Derwent. There is also easy access to the nearby ring road, A38 and A52. Excellent schooling in the area including Landau Forte College. Markeaton, Ashgate and St Marys primary schools. Also Derby boys grammar school and Derby High in nearby Littleover.

Accommodation

Ground Floor

Entrance Hall

11'7" x 6'5" (3.55 x 1.96)

With spacious L-shaped entrance hall with central heating radiator, feature archway, sweeping feature staircase to first floor with useful storage area beneath.

Front Lounge

16'1" x 14'1" (4.91 x 4.31)

With feature fireplace, central heating radiator and window to front.

Rear Reception

19'0" x 10'7" (5.80 x 3.24)

With central heating radiator, feature fireplace and windows to side and rear.

Fitted Kitchen

12'0" x 8'9" (3.66 x 2.69)

A range of stylish worktops with inset sink unit with mixer tap, fitted base cupboards and drawers, complimentary wall mounted cupboards, inset four plate induction hob, double oven and fridge and window to rear.

Inner Lobby

9'9" x 4'9" (2.98 x 1.45)

With access to garden and utility room.

Utility

With appliance spaces suitable for washing machine, freezer and storage.

Fitted Guest Cloakroom

6'9" x 4'11" (2.07 x 1.50)

With WC and wash handbasin.

First Floor

Landing

18'10" x 6'3" (5.76 x 1.93)

A very impressive, spacious, semi-galleried landing.

Bedroom One

14'4" x 13'9" (4.37 x 4.21)

With feature fireplace and central heating radiator.

Bedroom Two

12'1" x 10'7" (3.70 x 3.24)

With feature fireplace and central heating radiator.

Bedroom Three

14'2" x 7'4" (4.34 x 2.25)

With central heating radiator.

Shower Room

11'11" x 9'1" (3.64 x 2.78)

With a suite in white comprising low flush WC, pedestal wash handbasin, bidet, shower cubicle and window to rear.

Second Floor

Attic Room

19'3" x 10'6" & 19'3" x 10'6" (5.89 x 3.21 & 5.89 x 3.21)

Which comprises two compartments both with radiators.

Ground Floor Apartment

The ground floor flat benefits from electric heating.

Lounge

15'10" x 11'7" (4.85 x 3.54)

Kitchen

10'0" x 7'1" (3.07 x 2.18)

With induction hob, electric oven and plumbing for washing machine

Bedroom

16'8" x 8'2" (5.10 x 2.50)

Shower Room

9'8" x 4'3" (2.96 x 1.30)

With low flush WC, wash handbasin, shower cubicle and heated towel radiator.

Outside

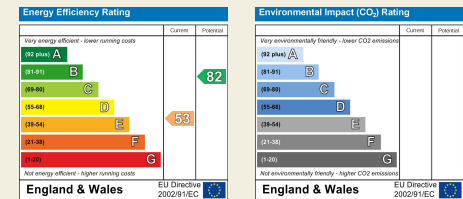
To the rear of the property is a very pleasant garden offering a good degree of privacy, patio seating areas and steps leading down to a driveway providing off-road parking space in a very central location to Derby City centre.

Council Tax Band D

Duffield House
 Town Street
 Duffield
 Derbyshire
 DE56 4GD

T: 01332 843390

E: duffield@fletcherandcompany.co.uk
 www.fletcherandcompany.co.uk



These particulars do not constitute an offer or a contract neither do they form part of an offer or contract. The vendor does not make or give and Messrs. Fletcher & Company nor any person employed has any authority to make or give any representation or warranty, written or oral, in relation to this property. Whilst we endeavour to make our sales details accurate and reliable, if there is any point which is of particular importance to you, please contact the office and we will be pleased to check the information for you, particularly if contemplating travelling some distance to view the property. None of the services or appliances to the property have been tested and any prospective purchasers should satisfy themselves as to their adequacy prior to committing themselves to purchase.

**Fletcher
 & Company**